

Fresh Water ▪ *Adapted Test*

Fresh Water

Multiple Choice

Write the letter of the correct answer on the line at the left.

- ____ 1. What is the energy source that powers the water cycle?
 - a. gravity
 - b. the sun
 - c. precipitation

- ____ 2. A small river that flows into a larger river is called a
 - a. divide.
 - b. wetland.
 - c. tributary.

- ____ 3. One type of freshwater wetland is a
 - a. reservoir.
 - b. marsh.
 - c. watershed.

- ____ 4. A large wetland in Florida is
 - a. Lake Okeechobee.
 - b. Florida Bay.
 - c. the Everglades.

- ____ 5. Materials that allow water to pass through them easily are
 - a. permeable materials.
 - b. saturated materials.
 - c. impermeable materials.

- ____ 6. Water rises because of pressure in a(an)
 - a. water table.
 - b. artesian well.
 - c. wetland.

- ____ 7. What is the process of supplying water to an area of land in order to make the land useful for growing crops?
 - a. desalination
 - b. coagulation
 - c. irrigation

- ____ 8. The practice of using less of a resource so that it will not be used up is
 - a. filtration.
 - b. conservation.
 - c. concentration.

Fresh Water ▪ *Adapted Test*

- _____ 9. What is the measure of the amount of one substance in a certain volume of another substance?
- coagulation
 - concentration
 - desalination
- _____ 10. The first step in drinking-water treatment is usually
- coagulation.
 - chlorination.
 - filtration.

Completion

Read each word in the box. In each sentence below, fill in one of the words. Not all words will be used.

solution	wetland	pollutant
watershed	aquifer	groundwater

11. Any substance that causes water pollution is called a(an) _____.
12. Water that fills the cracks and spaces underground is called _____.
13. The land area that supplies water to a river system is called a(an) _____.
14. A land area that is covered with a shallow layer of water during some or all of the year is a(an) _____.
15. An underground layer of rock or sediment that holds water is called a(an) _____.

True or False

If a statement is true, write true. If it is false, write false.

- _____ 16. The hardness of water is a measure of its pH.
- _____ 17. Pollutants carried in runoff from farm fields are considered a nonpoint source.

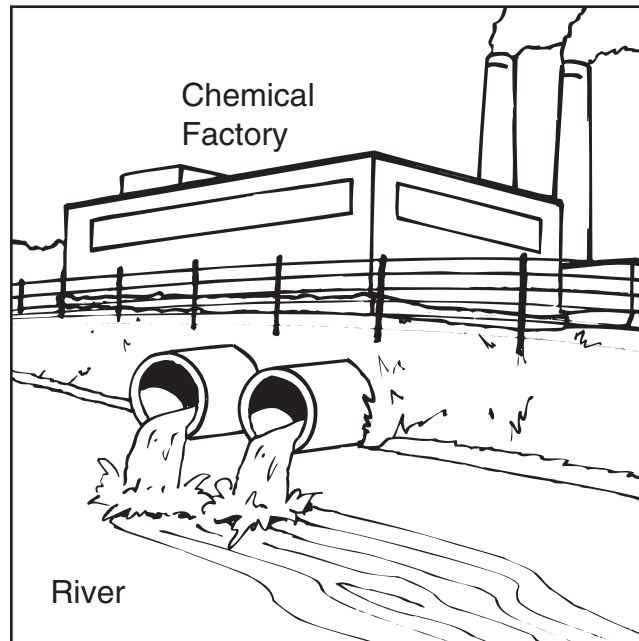


Fresh Water ▪ *Adapted Test*

- _____ 18. A river and all its tributaries make up a river system.
- _____ 19. No living things are able to live in wetlands.
- _____ 20. To get water from a well, the well has to reach below the water table.

Using Science Skills

The picture below shows polluted water coming from a chemical factory. Use the picture to answer questions 21 and 22.

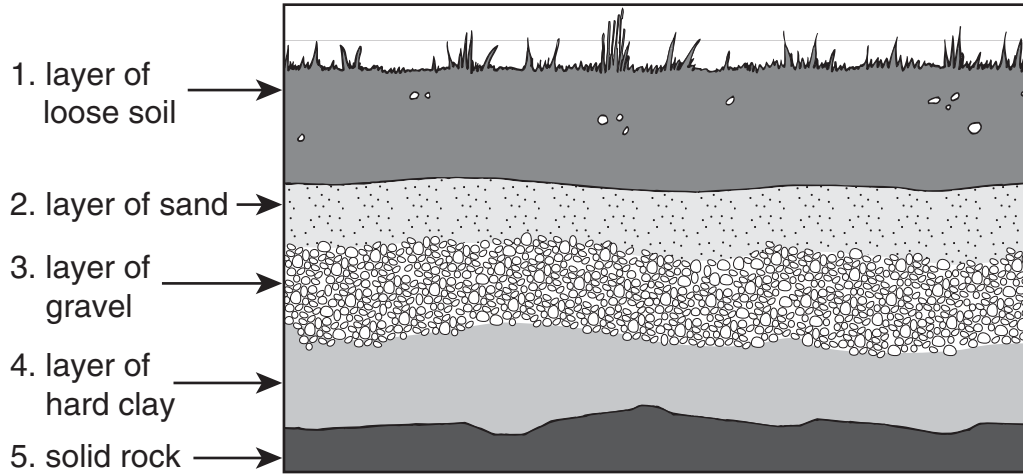


- _____ 21. **Classifying** How would you classify this source of pollution?
- a. as a point source
 - b. as an example of recycling
 - c. as a nonpoint source
- _____ 22. **Drawing Conclusions** What could the owners of this factory do to solve this problem?
- a. They could reuse the water instead of releasing it.
 - b. They could pour the water on nearby fields.
 - c. They could add more pipes to the river bank.

Fresh Water ▪ *Adapted Test*

Using Science Skills

The picture below shows layers of different materials underground. Use the picture to answer questions 23, 24, and 25.



- _____ **23. Interpreting Diagrams** Which layers are permeable materials?

 - a. layers 1 and 2
 - b. layers 1, 2, and 3
 - c. layers 4 and 5

- _____ **24. Interpreting Diagrams** Which layers are impermeable materials?

 - a. layers 1 and 2
 - b. layers 1, 2, and 3
 - c. layers 4 and 5

- _____ **25. Drawing Conclusions** In which layer would it be possible for a water table to form?

 - a. layer 3
 - b. layer 4
 - c. layer 5